

# delmatic metro Dali one relay



The **dali one relay** provides addressable control of non-Dali light sources and other devices such as fan-coils, blinds etc within a Dali environment.

The unit is typically used in applications where the majority of controlled lights are Dali and yet certain luminaires are not available with Dali ballasts but need to be switched, or where other devices such as water valves, VAV units or window blinds require to be controlled.

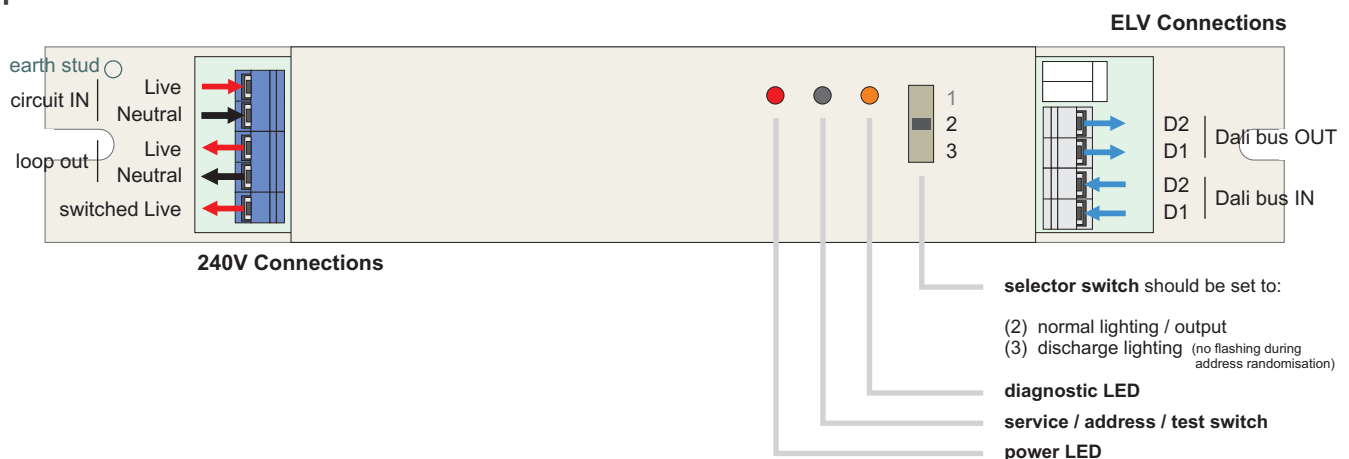
The **dali one relay** connects to the Dali buswire which links Dali luminaires, sensors and other devices to the Dali control module: the 16A mechanically-latched relay operates in response to commands transmitted along the Dali bus.

The unit derives its power from the incoming 230V circuit. Integral LEDs indicate power & diagnostic functions while a selector switch configures the relay for control of normal lighting or discharge lighting (inhibiting frequent switching).



■ **dali one relay**  
product ref: 208A1

## product details



## connection

The **dali one relay** is compatible with the complete range of Delmatic Dali control modules. The unit may connect to:

- the Dali bus from the **Dali Buswire module** which connects to Dali luminaires and Dali devices,
- the Dali bus on any or all of the twelve channels from the **Dali Broadcast module**,
- Dali outputs from the **Zero Twelve Dali plug-in module**.

## technical details

### supply

1 x 220-240V~ 50/60Hz single phase 10A lighting circuit

### switched output

1 x 16A switched output (max 1.5 sq.mm cable)

### Dali bus inputs

2 plug-in ports (two-pin) for bus connection (max 1.5 sq.mm cable)

### construction / ambient temp / relative humidity

metal enclosure / 0 to +50°C / 20% to 90% non condensing

## dimensions and mounting details

